



Sidewalk Audit

In October 2017 a group of eight Ridgewood citizens performed an audit of sidewalks in the Central Business District, looking for sidewalk and curb irregularities based on guidelines provided to us by Village Engineer Chris Rutishaucher. The following pages contain documents created by the four teams in different areas of town detailing issues they found.

Respectfully Submitted

Beth Abbott
Sheila Brogan
Sue Ullrich
Claudia Botz
Bill Carbone
Hans-Jurgen Lehmann
Deanna Schablik
Joan Larkin

Age Friendly Ridgewood
www.agefriendlyridgewood.org
[201-632-1554](tel:201-632-1554)

and on Facebook ~Age Friendly Ridgewood ~

Sidewalk Audit Document 1 of 4
November 2, 2017

Block Surveying: Joan Larkin & Deanna Schablik

Whole Foods to Garber, Wilsey Square, then to W. Ridgewood to Heights & back (did not do train station)

1. Sidewalk cracks .25 inches or greater/cracks that could catch a ladies heel:
2. Whole Foods entrance (across from Manjal; holes in sidewalk.
3. 1.5 inch raise of sidewalk (opposite Fairbanks)
4. Meter#507 large hole in sidewalk (parking lot of train station near Smoked) & first left of sidewalk cracks (pic)



5. Elevation change of sidewalk from Vera's Bridal to Pease Library.
6. Many treewells have unevenness from brick to sidewalk.
7. Entrance to Tarvin Driveway; large cracks and holes. (picture below)



8. ENTIRE sidewalk between Tarvin & Heights – A MESS!
9. 88 W. Ridgewood Ave. sidewalk
- 10.50 W. Ridgewood + 15 feet of sidewalk towards Puzo's sidewalks in front of the Carlo's. Expert Tutoring & Barbershop
11. *Water cap at crosswalk and inch above ground needs to be flush (no pun intended!) pic

11. *Water cap at crosswalk and inch above ground needs to be flush (no pun intended!) pic



Potential bench locations:

No potential bench areas, but those in area need refurbishing.

Corner/curb/ramp issues:

Directly in front of Capitol One (yellow zone curbs missing completely) pic



Corner of La Laterna at ramp area. Large space between bricks and curb.

Corner of Westside Bagels (tile cracked)

Corner of W. Ridgewood & Washington – both ramps need replacement.

November 9, 2017

Ridgewood NJ Sidewalk and Curb Audit -- Document 2 of 4

Auditors: Hans-Jurgen Lehmann and Beth Abbott

Overall Notes:

Any crack or vertical difference mentioned here is .25 inches or greater, most were $\frac{1}{2}$, $\frac{3}{4}$ inch, 1 inch or more, and could catch a ladies heel.

Every 14 feet, on almost every block on Ridgewood Avenue, there is a crack that runs from the building to the curb that is $\frac{3}{4}$ inches or wider and often previous filling has decayed so they need to be filled again. These cracks seem to separate segments of the sidewalk.

Here are two examples:

(north side Ridgewood Ave, near Shoe Inn and/or Original Salon)



(South side Ridgewood Ave near Ridgewood Man):



Block: North side of East Ridgewood Ave between Oak St and Chestnut St

NE Corner of E. Ridgewood Ave and Chestnut St: loose and missing bricks, broken curb:



Same corner on curb ramp large deep crack:



Block: North side of E. Ridgewood Ave between Chestnut and N. Broad.

NW Corner of E. Ridgewood Ave and Chestnut St, breaks in curb:



Block: South side of East Ridgewood Ave between Broad St and Chestnut/Prospect.

SE Corner Broad and E Ridgewood (Finca) big gaps around red in ramp:



Continued: Block: South side of East Ridgewood Ave between Broad St and Chestnut/Prospect:
In Front of Citibank, crack and slope next to it:



Also near Citibank, unevenness around metal meter cover:



Continued: Block: South side of East Ridgewood Ave between Broad St and Chestnut/Prospect:
Loose brick at curb between Citibank and Biltmore Tuxedo and large crack/pit filled with water:



Continued: Block: South side of East Ridgewood Ave between Broad St and Chestnut/Prospect:

In front of Biltmore Tuxedo rough sidewalk with lots of pits that would catch heels or wheels:



And in same area this set of cracks:



Continued: Block: South side of East Ridgewood Ave between Broad St and Chestnut/Prospect:

Next to red post with police box, hole in brick, water meter, curb damaged:
near SW Corner of E Ridgewood Ave and Chestnut St:



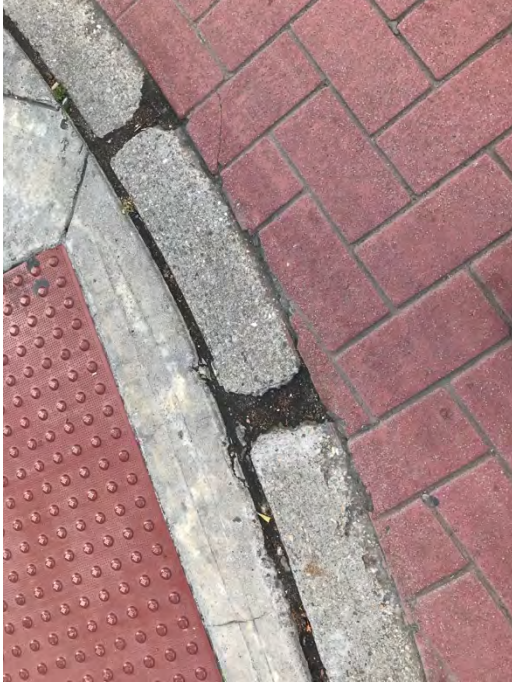
Continued: Block: South side of East Ridgewood Ave between Broad St and Chestnut/Prospect:

Planter at corner East Ridgewood Ave and Prospect St SW corner:



Block of South Side of East Ridgewood Ave between Prospect St and Van Neste Square:

SE Corner Prospect St and East Ridgewood Ave, curb breaks:



In front of Shumi near front door:



Continued: Block of South Side of East Ridgewood Ave between Prospect St and Van Neste Square:

In front of Oasis and Papyrus at curb:



Continued: Block of South Side of East Ridgewood Ave between Prospect St and Van Neste Square:

In front of Chase bank, loose brick:



In front of Ridgewood Coffee at curb:



Corner near Bus Station and Van Neste Square:

At corner nearest bus station red ramp good but more than an inch vertical drop to street from there:



At Van Neste Square right near part entrance at E Ridgewood Ave 7/8 inch vertical between sidewalk and bricks:



Near Clock across from Van Neste all curb ramps and sidewalks in terrible shape



Block: West side of Prospect St between E Ridgewood Ave and Hudson St:

On side of the old Bank/Fish restaurant building—uneven, cracks:



On this block many open holes, possible where parking meter poles previously installed.



Continued: Block: West side of Prospect St between E Ridgewood Ave and Hudson St:

In front of Sam's Barber, unevenness and cracks around basement door:



Block: North Side of Hudson St between Prospect and South Broad, from Village Green over past parking lot:

Area near Village Green Corner around fire hydrant uneven and numerous cracks:



Curbs near Vintage 61 and Vacuum store:



Continued: Block: North Side of Hudson St between Prospect and South Broad,
from Village Green over past parking lot:

Huge cracks and curb breaks, too numerous to mention and photograph:



Block: South Broad between E Ridgewood Ave and Hudson St:

West side of street Near Stella at curb:



West side of street In front of Snips for Pips:



Continue: Block: South Broad between E Ridgewood Ave and Hudson St:

Corner S. Broad and Hudson, northeast corner—problems in corner cut and bad tar patch near utility pole:



Continue: Block: South Broad between E Ridgewood Ave and Hudson St:

At painted crossing of Hudson between Super Cellars and Knights of Columbus building there are no ramps on either corner:



Block: South side of Hudson St between South Broad and Prospect

In front of Knights of Columbus building:



Right near Martial Arts entrance:



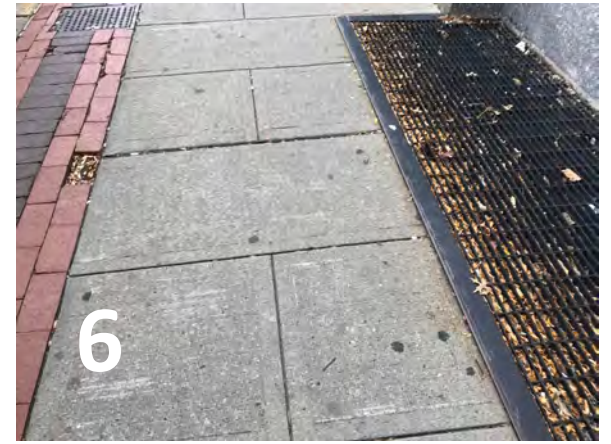
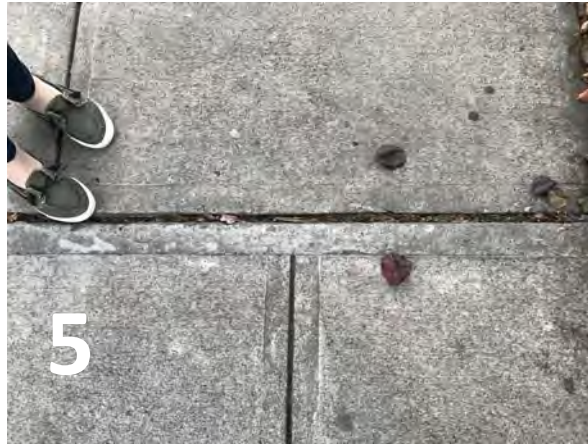
Continue: Block: South side of Hudson St between South Broad and Prospect

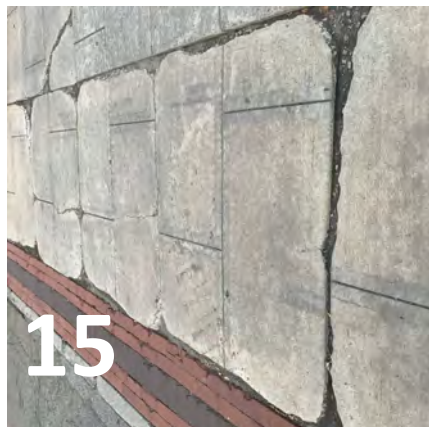
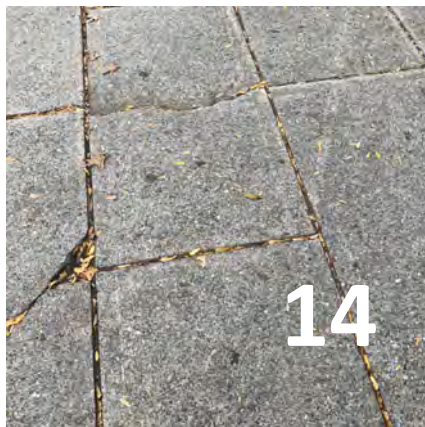
SW Corner curb at Prospect and Hudson, at Mt Carmel church:



End of Report 2

1. Franklin Ave. & Maple – by apartment building
2. Sidewalk & brick on Franklin Ave by apartment building
3. Christ Church by main walkway entrance on Franklin Ave
4. Cross walk east side at Cottage & Franklin by Christ Church
5. Cottage Place – by Atlantic Stewardship Bank
6. Westside of Cottage by RiteAid – brick missing with sidewalk narrows due to gate
7. E. Ridgewood Ave In front of Daily Treat
8. E. Ridgewood Ave by driveway sidewalk by Post Office
9. Walnut entrance into Walnut Parking lot
10. Walnut – crack by Just Our Shoes
11. E. Ridgewood Ave by Panico and Pancake House
12. E. Ridgewood Ave by Dr. Voon sign (Tea Tree Spa)
13. E. Ridgewood Ave by Kate Spade
14. E. Ridgewood Ave by Kate Spade
15. Cottage Place – entrance to Cottage Place parking lot (7 slabs cracked sidewalk)
16. Cottage Place – exit Cottage Place parking lot
17. Cottage Place – by Ed Center (between sidewalk and brick)
18. Franklin Ave – in front of Atlantic Stewardship Bank (deep and wide joint between slabs)
19. Franklin & Walnut – crosswalk needs to be painted and patched
20. Franklin – apron to Walnut parking lot
21. Franklin – in front of Village Garage (loose gravel should be swept up – slippery)
22. Oak St – in front of Brooklyn Pizza by tree
23. Oak St – Lisa’s Restaurant – tables less than 4’ passage
24. Franklin & Oak by apartments across from Ben & Jerry’s (ramp is broken up)
25. Chestnut & Franklin – curbs
26. Apron to Chestnut parking
27. Cross walk at Chestnut & East Ridgewood Ave (east & westside)
28. Same as 27
29. Chestnut St by Beauty Plus
30. Chestnut - replace sidewalk where there are glass squares
31. Metal door to basement by Ridgewood Paint is not flat to side walk
32. Franklin near Chestnut by apron to Boiling Springs
33. Franklin Ave & Broad St (east) no curb cutout to crosswalk
34. Franklin Ave – sidewalk by old Ken Smith
35. Franklin – need to replace from Broad – Chestnut on north side of Franklin
36. Franklin & Chestnut (west side) curb cut needs replacement
37. Franklin & Chestnut (east side) curb cut does not meet crosswalk due to sewer)
38. Franklin & Oak – lower curb cut needed by crosswalk
39. Franklin – sidewalk by Valley National Bank
40. Franklin & Walnut (east side) no curb cut









1. N. Maple across from #154&160 (in front of sewer drain)
2. N. Maple across from 168
3. ". "
4. N Maple by pole #60459
5. Southwest corner Linwood & Maple
6. #140 N Maple
7. 130 N Maple (driveway entrance)
8. Kings driveway entrance
9. Needs handicap access across from Library walkway
10. N Maple in front of Kings
11. N Maple (on Kings side) across from Elks #111 - footprints in cement
12. ". "
13. Thru 19 - N Maple across from #89 entire Kings second entrance
14. ". "
15. ". "
16. ". "
17. ". "
18. ". "
19. ". "
20. N Maple at Kings south exit across from Marshall Pl
21. ". "
22. N Maple across from # 76 - no cover on utility opening
23. Corner N Maple & Franklin handicap access s/b wider (entire street a mess)
24. N Maple in front of Brake o Rams
25. N Maple in front of Hallmark Carpet
26. ". "
27. ". "
28. N Maple by corner of Ridgewood Ave near 1st tree
29. NW corner of Maple & Ridgewood Ave
30. 257 Ridgewood Ave by PNC bank
31. ". "
32. Ridgewood Ave in front of Gap
33. 211 Ridgewood Ave (Bookends)
34. 216 Ridgewood Ave before old Jos A Banks
35. Ridgewood Ave Fox's driveway
36. Ridgewood Ave from Fox's down to Maple Ave
37. N Maple Ave front of Jersey Mikes
38. N Maple Ave Jersey Mikes side door
39. ". "
40. N Maple Ave Bank of America south entrance
41. N Maple Ave - Bank of America
42. ". "

43. ". "

44. 75 N Maple

45. 81 N Maple (NJ Snoring & Sinus)

46. 111 N Maple (old Elks Club)

1. Broad St - Ridgewood Cycle Shop
2. 11 Broad St - Yoga Studio
3. Corner Broad & Ridgewood Ave
4. Broad St (train side of street) space between all sidewalk sections
5. “. “
6. Broad St - in front of old Taxi stand
7. Corner Broad & Franklin - train side of street)

No pictures:

On Broad St there are cracks in sidewalk, but they are even (not elevated) in front of:

Boiling Springs Bank

Bagelicious

Egidio #17